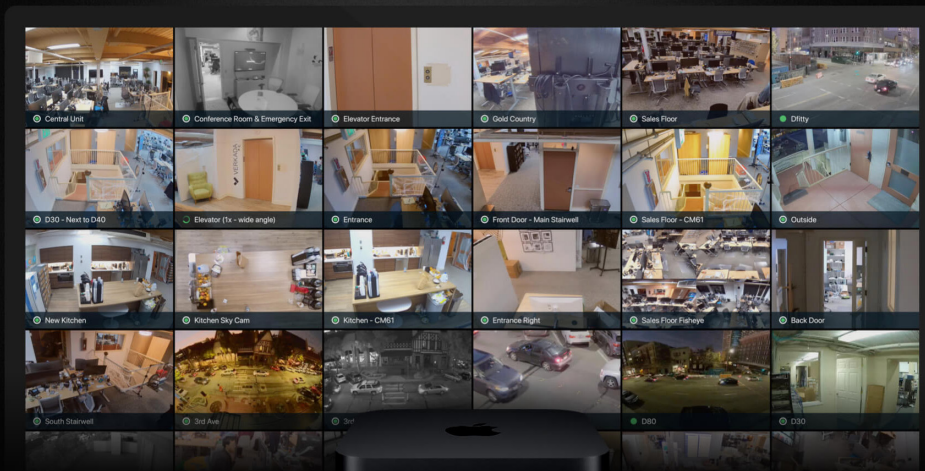




VX51 Viewing Station

Optimized For Live Viewing



Overview

The VX51 is a dedicated device that streams up to 180 camera feeds (36 cameras per page, up to five pages) simultaneously to any display with ultra-low latency, crisp video playback, and customizable layouts. Built on the powerful Mac mini™ platform, the VX51 is the viewing platform of choice for customers with mission-critical real-time viewing requirements.

Administrator Managed Device

Admins remotely manage the VX51, selecting video feeds to display and customizing layouts. Non-admin viewers do not need accounts, cannot access historical footage, and cannot modify display settings.

Plug-and-Play by Design

Simply connect the device to your network and display and it's ready to stream. Zero local configuration needed.

Stable and Resilient

Streams play continuously without interruption for both local and remote streaming. There is no need to reset the device or relaunch a browser or application – streams restart automatically after a power outage.

Supported by Verkada

Admins configure the VX51 in Command, just like their cameras. The VX51 is backed by our industry-leading 10-year warranty and the dedicated Verkada customer support team.

Key Features

- Stream up to 180 cameras across five pages on a single display
- Ultra-low latency with crisp video playback
- Administrator managed device without requiring additional accounts
- Plug-and-play with zero local configuration needed
- Automatically restarts after a power outage
- 10-year warranty



Ordering Information

Product Name	Description	Cost (MSRP)
VX51	Viewing station hardware	\$1,999
VX51-LIC-1Y	1-year VX51 cloud license	\$499
VX51-LIC-3Y	3-year VX51 cloud license	\$1,299
VX51-LIC-5Y	5-year VX51 cloud license	\$1,999
VX51-LIC-10Y	10-year VX51 cloud license	\$3,999

Tech Specs

Supported Displays	One display per station	Connectors	HDMI 2.0 Port, Gigabit Ethernet Port
Number of Streams	Up to 36 cameras (local and remote)	Connectivity	10/100/1000BASE-T Gigabit Ethernet (RJ-45)
Processor	3.6Ghz quad-core Intel Core i3	Operating	Line voltage: 100–240V AC Frequency: 50Hz to 60Hz, single phase Maximum continuous power: 150W Operating temperature: 50° to 95° F (10° to 35° C) Storage temperature: -40° to 116° F (-40° to 47° C) Relative humidity: 5% to 90% noncondensing Operating altitude: tested up to 16,400 feet (5000 meters)
Graphics	Intel UHD Graphics 630		
Dimensions	7.7 x 7.7 x 1.4 in		
Weight	2.9 lbs		
Display	Up to 4096 x 2160 resolution		
Included Accessories	HDMI cord, setup guide, power cord		

Industry-Leading 10-Year Product Warranty

All Verkada hardware purchases are backed by our 10-year limited warranty. For more information, visit verkada.com/support/terms-of-sale.

For more information and to learn about a free 30-day trial, contact sales@verkada.com.